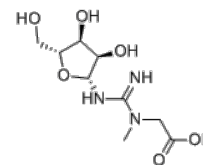


Product Name : Creatine riboside
Cat. No. : PC-38515
CAS No. : 1616693-92-5
Molecular Formula : C₉H₁₇N₃O₆
Molecular Weight : 263.35
Target : Other Targets
Solubility : 10 mM in DMSO



Biological Activity

Creatine riboside is a metabolite standard and classifier of lung cancer status in all and stage I-II cases, important for early detection, and also associated with worse prognosis in stage I-II lung cancer.

References

Mathé EA, et al. Cancer Res. 2014 Jun 15;74(12):3259-70.

Dhaval Patel, et al. Clin Cancer Res. 2017 Sep 1;23(17):5302-5310.

Caution: Product has not been fully validated for medical applications. Lab Use Only!

E-mail: tech@probechem.com